



WELCOME TO

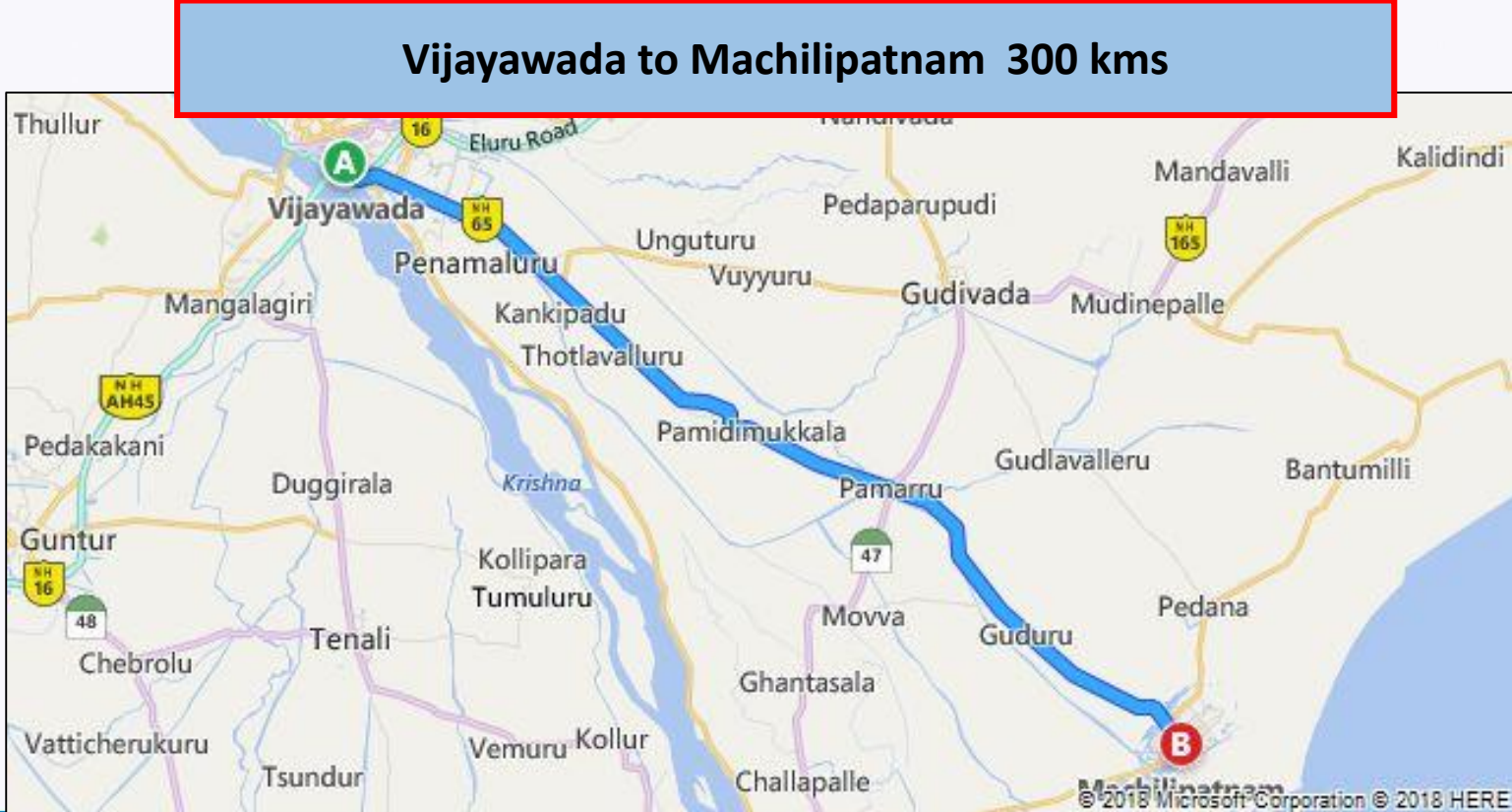
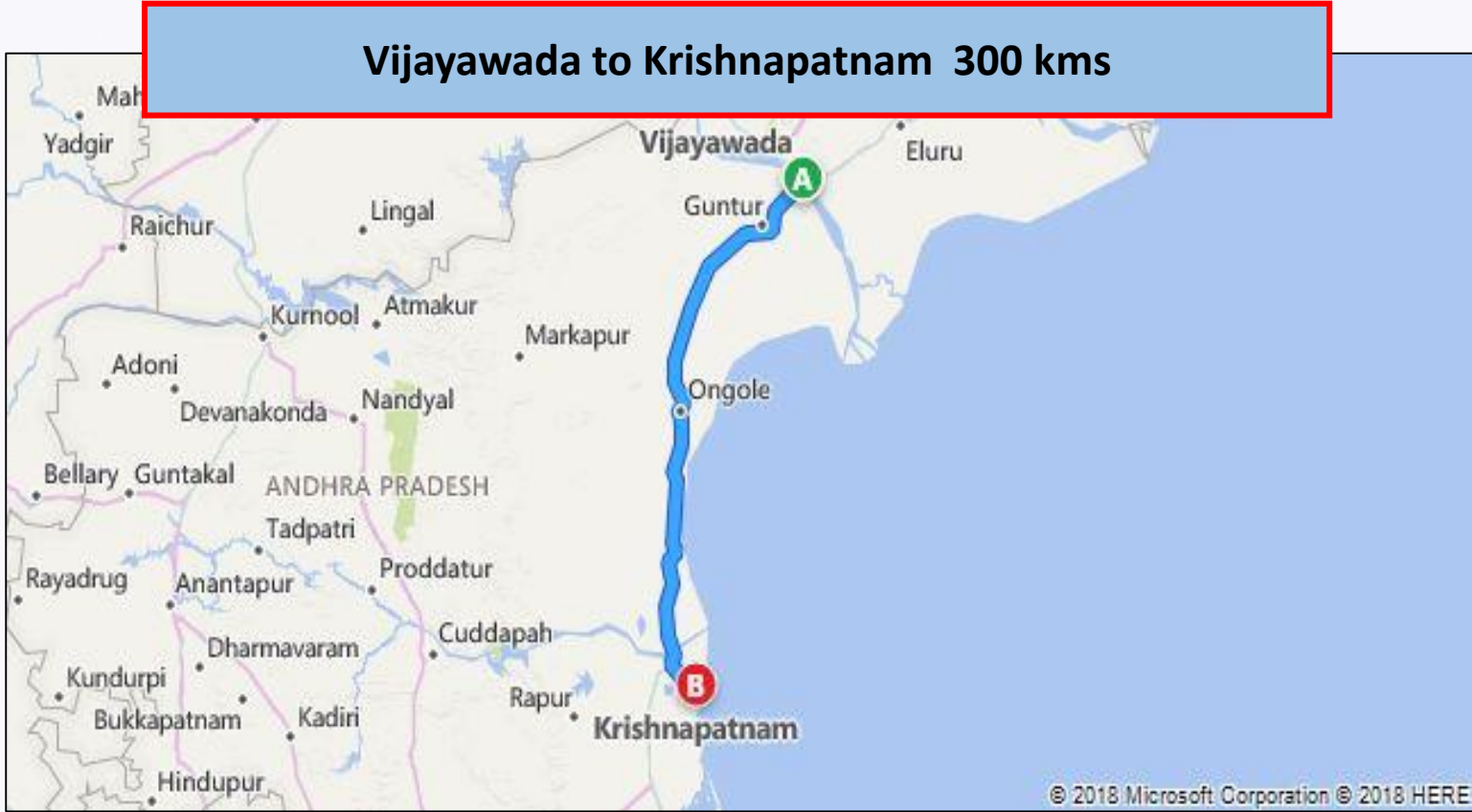
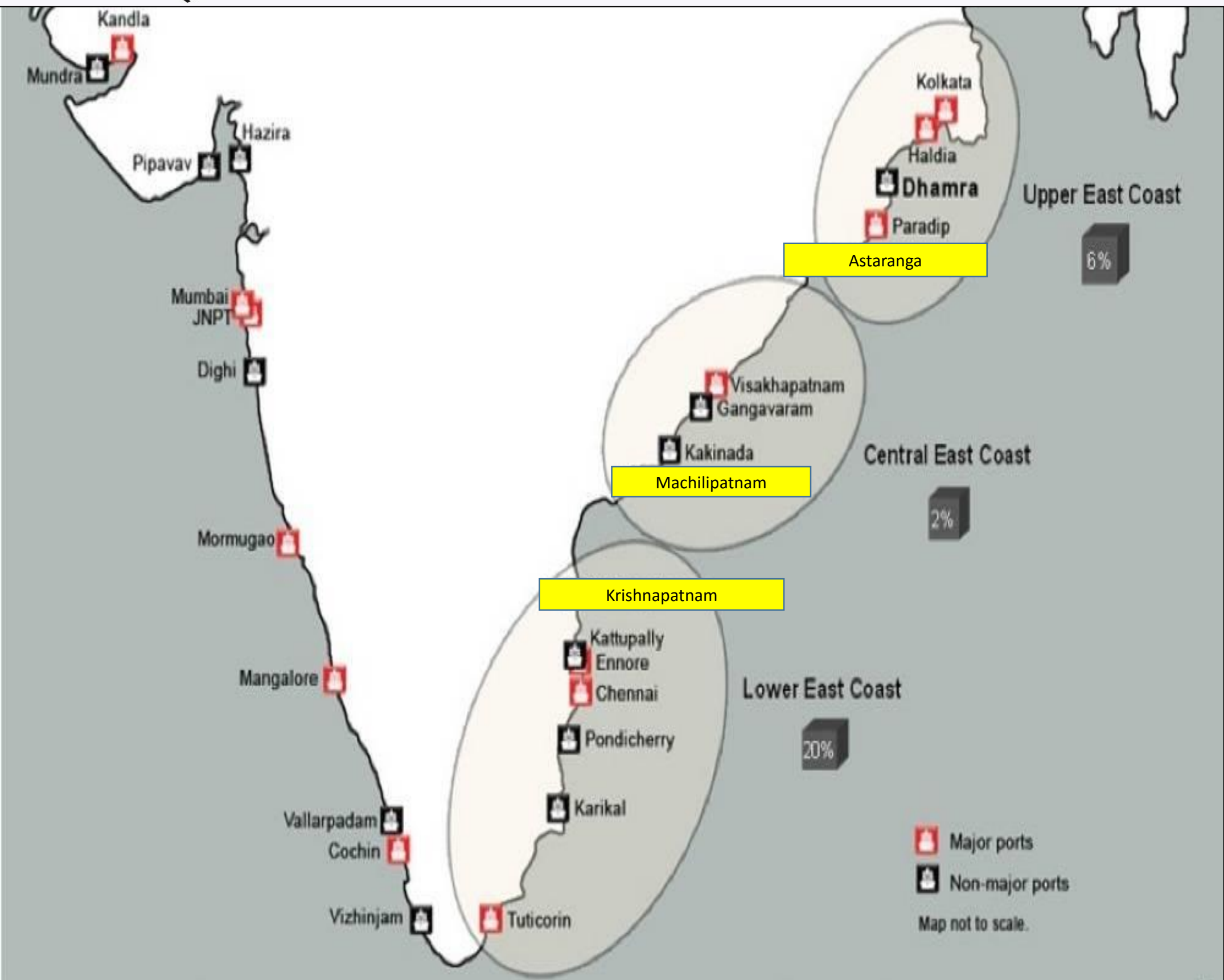


NAVAYUGA CONTAINER TERMINAL

December 2018



CVR Navayuga Group Ports





Port Performance

NCT, Krishnapatnam is the **largest container terminal in Andhra Pradesh**

NCT, Krishnapatnam is the **largest transshipment port on the East Coast of India**

It is a matter of pride that an Andhra Pradesh government port has achieved this honour.

	Vessels	Import	Export	Imp mty	Exp mty	Restow	TP	Total	Market Share%
		laden	laden						
DPW Chennai	31	21731	17578	3040	1095	222	0	43666	12
PSA - CITPL	25	48710	15608	719	18589	98	88	83812	23
PSA Tuticorin	21	16101	15588	2196	1801	68	0	35754	10
DBGT - Tuticorin	22	7544	5719	734	3187	4	6239	23427	6
VCTPL Vizag	22	11497	15293	6515	2245	0	1401	36951	10
DPW Cochin	54	19105	10842	2777	11785	178	1700	46387	13
NCT- (Krishnapatnam)	39	2948	11150	6800	897	239	20608	42642	11
Adani Katupalli	31	14718	22849	1233	9698	184	0	48682	13
Kakinada	5	88	353	366	1	0	0	808	0
Adani Ennore	3	5908	377	0	2554	50	0	8889	2
Marg Karaikal	0	0	0	0	0	0	0	0	0
Total	253	148350	115357	24380	51852	1043	30036	371018	100



Cargo Performance Jan to Nov - 2018

2018	Tobacco		Cotton Yarn		Cotton Linter		Chilli	
	Potential	Actual	Potential	Actual	Potential	Actual	Potential	Actual
Jan	1200	817	430	410	70	63	800	622
Feb	1200	924	570	554	40	32	1000	870
Mar	1600	1033	1050	1021	130	128	2400	2243
Apr	1300	785	800	751	70	60	1300	1095
May	1400	646	1050	958	300	271	1100	951
Jun	1500	882	940	892	150	124	700	508
Jul	1250	609	1150	1136	350	328	900	775
Aug	1350	858	750	683	50	30	700	529
Sep	1400	561	620	582	150	108	900	681
Oct	1300	459	750	670	100	62	1400	1344
Nov	1400	824	650	622	220	208	1600	1431
	15000	8398	8760	8279	1630	1414	12800	11049
Market Share %	56 %		95 %		87 %		86 %	



Feeder Network for Transshipment



Mainline vessels calling at Krishnapatnam can tranship EXIM boxes for connection to/fro:

Kolkata, Haldia, Vizag, Paradip, Kakinada, Cochin, Tuticorin





Vessel Services at NCT

World wide coverage !

Sector	Service	Operator	Coverage Area	Frequency	Day of Call
Far East	CHX	Maersk	Tanjung Pelepas – Xingang - Qingdao - Busan- Shanghai - Nansha	Weekly	Monday
	ACS	Hyundai / Zim	Port Klang – Singapore – Cai Lan - Busan – Ulsan – Shanghai – Ningbo – Yantian	Weekly	Friday
Middle East	Shuttle	Maersk	Colombo – Salalah - Colombo	Weekly	Sunday
	PIX-2	Shreyas	Tuticorin – Cochin – Jebel Ali -Mundra	Weekly	Saturday
	CCG	Simatech EMC	Colombo - Jebel ali	Tri Monthly	Tuesday
Colombo	ECX	Shreyas	Colombo	Weekly	Wednesday
	CCS-1	FAR Shipping	Colombo	Weekly	Thursday
Coastal Feeder Services for Transhipment Containers					
Coastal	ECS 2 loops / 3 vessels	Shreyas	1. Krishnapatnam - Haldia – Paradip /Vizag/Kakinada - Krishnapatnam 2. Krishnapatnam - Kolkata - Krishnapatnam	Tri-Weekly	Indian Flag feeder for transhipment containers
	Bharat Feeder	Samudera	Krishnapatnam - Vizag - Kolkata - Krishnapatnam	Bi Monthly	Indian Flag feeder for transhipment containers
	EXX	XCL	Krishnapatnam - Kolkata – Krishnapatnam	Weekly	Foreign Flag feeder for transhipment containers



Ocean2Door India Pvt Ltd (O2D)

Door to Door Services



Booking Facilitation



Door to Door Cargo Service

1700 TEUs monthly

Customers	Services
Exporters, importers, traders, brokers, forwarders supporting Liners at KPCT with incremental cargo	Ocean freight, warehousing, customs broking, transportation, handling, bonding, exim and domestic door delivery and pick up, surveys, fumigation, container purchase, cargo palletisation, packaging
Cargo Coverage	
Container : General, Reefer, Out of Gauge, Domestic , Coastal, Exim Breakbulk : Bagged, Loose, Project, Blocks Bulk : Dry, Liquid	



- 3 Customs Clearance Teams
- Central CCTV monitoring
- RFID for internal Vehicles
- Expressway Software : facilitating all on line container operations

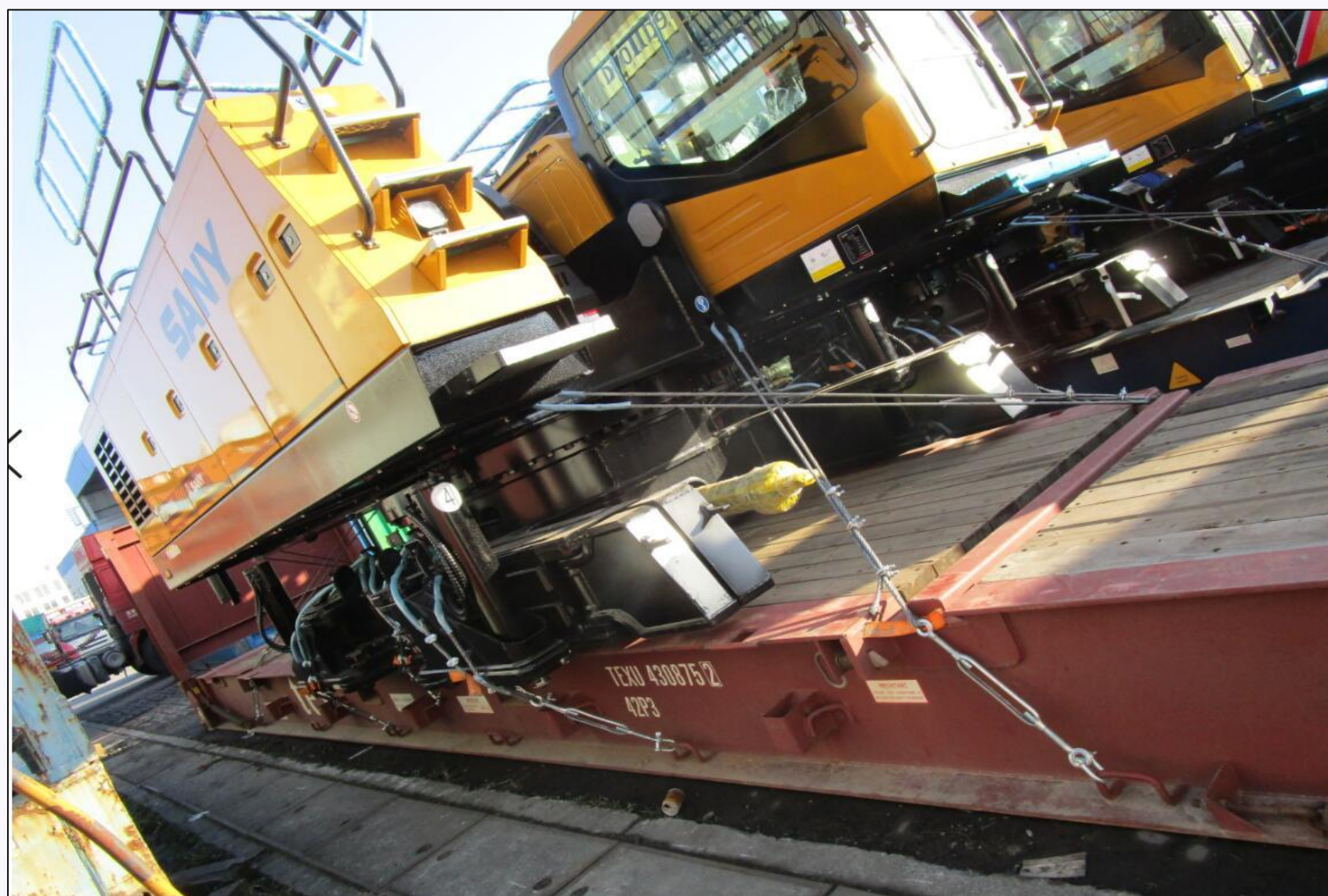
Container Trailer	: 500
14 Tyre trailers	: 12
Trucks	: 300



Polavaram Project Imports

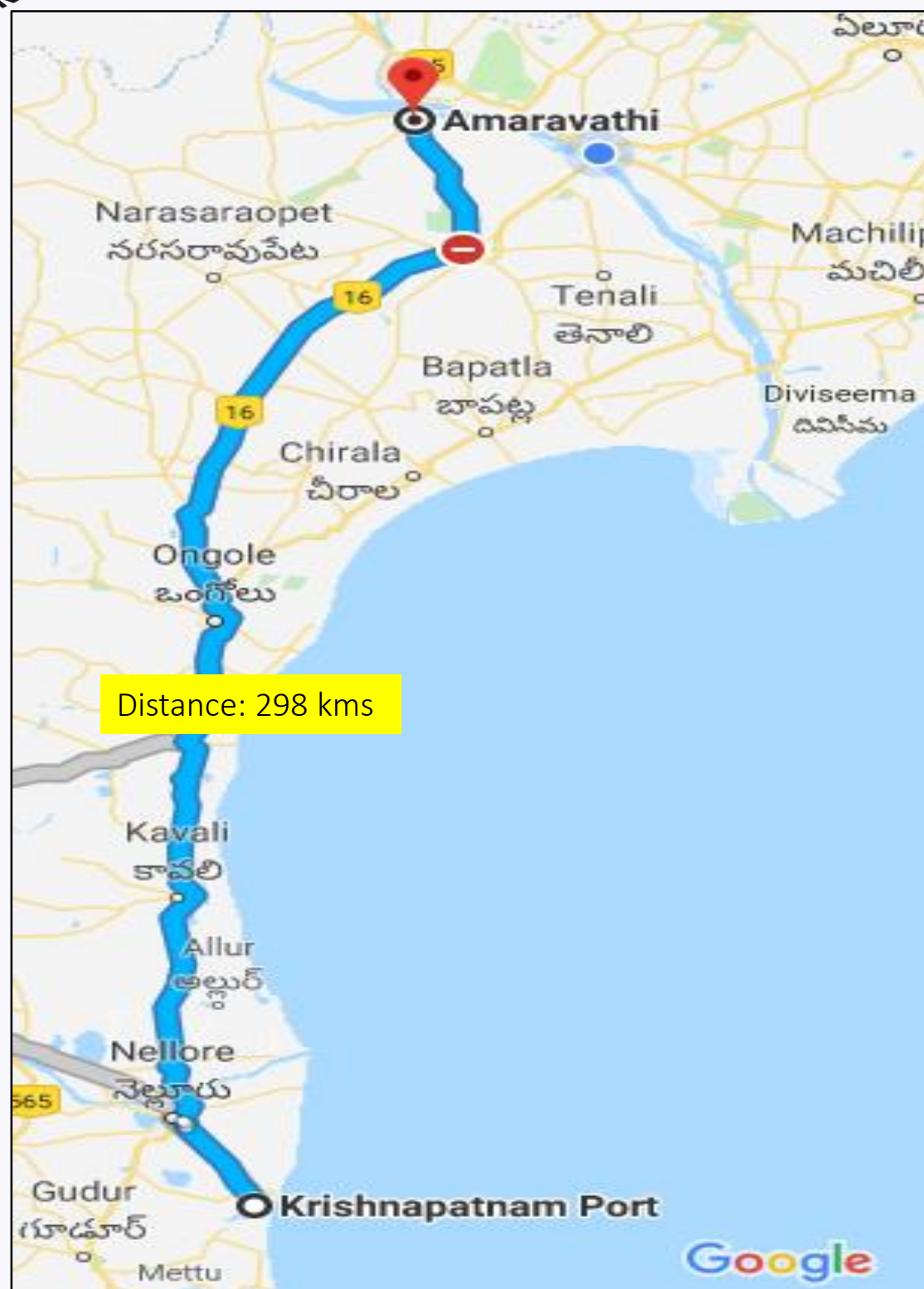
Machinery import from China
Gateway Port : Nhava Sheva
Terms : CIF

Gateway Port : Vizag
Terms : Ex-works
Cost Saving : USD 900 / 40'
Time Saving : 7 days





Amravathi Cargoes Handled at Krishnapatnam



Andhra Pradesh Township and Infrastructure Development Corporation
(APTIDCO)

1300 TEUs Construction Material
Imported from China and Korea
Via Krishnapatnam

Amravathi Sustainable Capital City Development Project
(ASCCDP)

500 TEUs
Imported from China and Korea
Via Krishnapatnam

Housing Project in Amravathi

100 TEUs building materials
Imported from Korea
Via Krishnapatnam



O2D Online Booking

Starting
shortly !

← → ↻ Secure | https://www.ocean2door.com/#/ ☆ ⋮

Home Container Calculator Login Register

OCEAN2DOOR

PLAY VIDEO

Door to Door
Delivery of Cargo

Origin ↔ Destination Commodity Select Container GET A QUOTE

* Online quotes are available for select routes





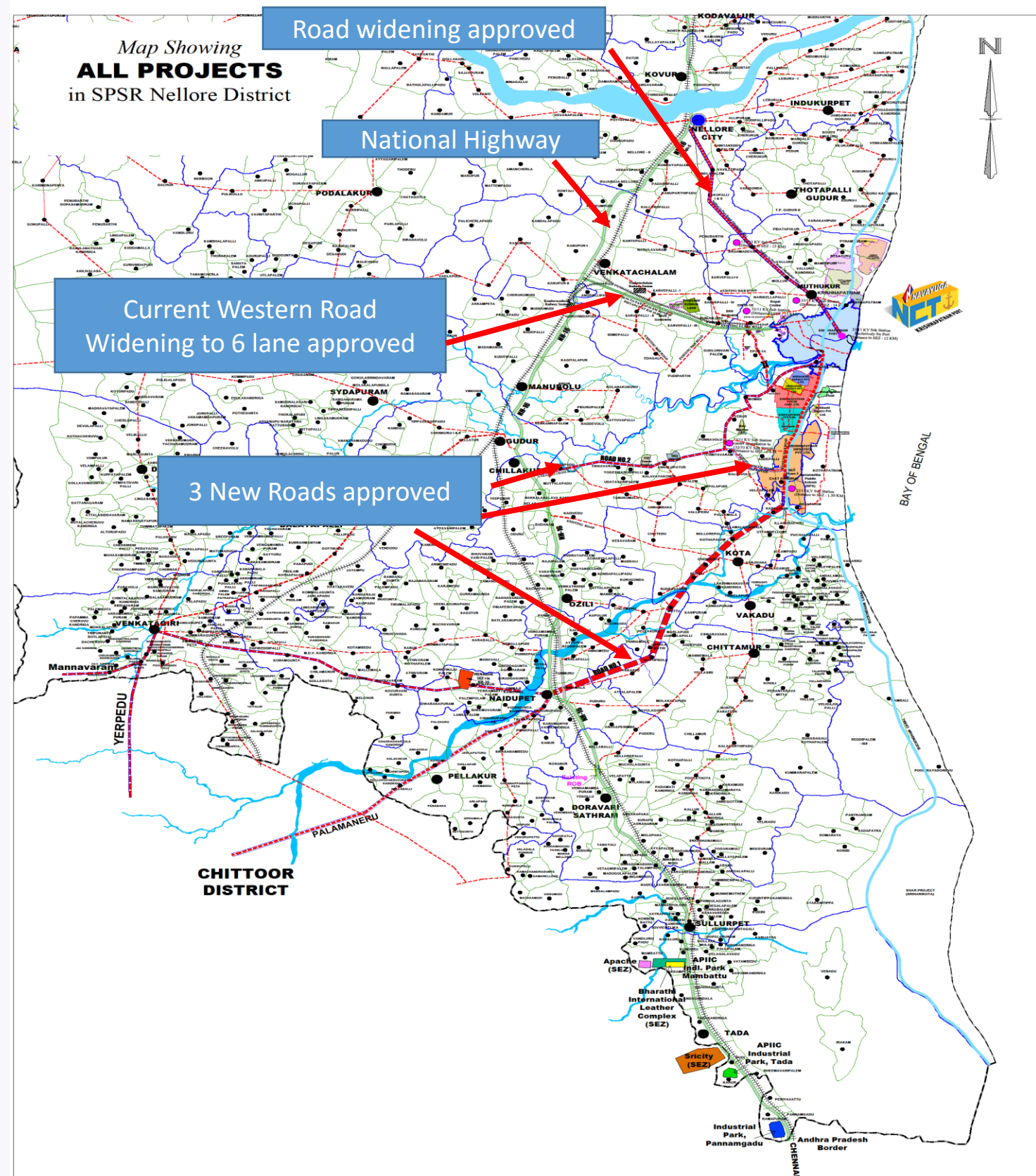
INFRASTRUCTURE UPGRADE



NCT – Terminal Infrastructure



	Phase I	Phase II
Date of Commissioning	Sep 2012	
Container Berths	2	7
Total Berth Length	650	2000
Terminal Capacity	1.2 Mn TEUs	4.8 Mn TEUs
Draft Alongside	16 mts	21 mts
Total Area (hectares)	36 ha	600 ha
Yard Ground slots	4600 TEUs	>10,000 TEUs
Yard Capacity	18400 TEUs	>40,000 TEUs
Reefer plugs	200	>1000
Quay cranes twin lift SPP	5	20
Rubber Tyred Gantry	9	40x42 MT
Reach Stackers (Kalmar)	10 x 42 MT	> 30



New Road Connectivity Projects



5 New RTGs

Commissioned
July 2018



5 new e-RTGs which have the potential to reduce energy costs by 80% and operating noise level by 65% whilst cutting down more than 1400 tonnes of Greenhouse Gases (GHG) emissions vis-à-vis the traditional diesel run RTGs.



Berth Extension Plan

Current Coastal vessels : 150 m additional quay length; Handled with 2 MHCs

Scheduled for upgradation to a regular berth

Total Quay length : $650 + 150 + 100 = 900\text{m}$

3 SPP QCs – new acquisition

Back up yard : Terminal capacity upgradation to 2 m TEUs





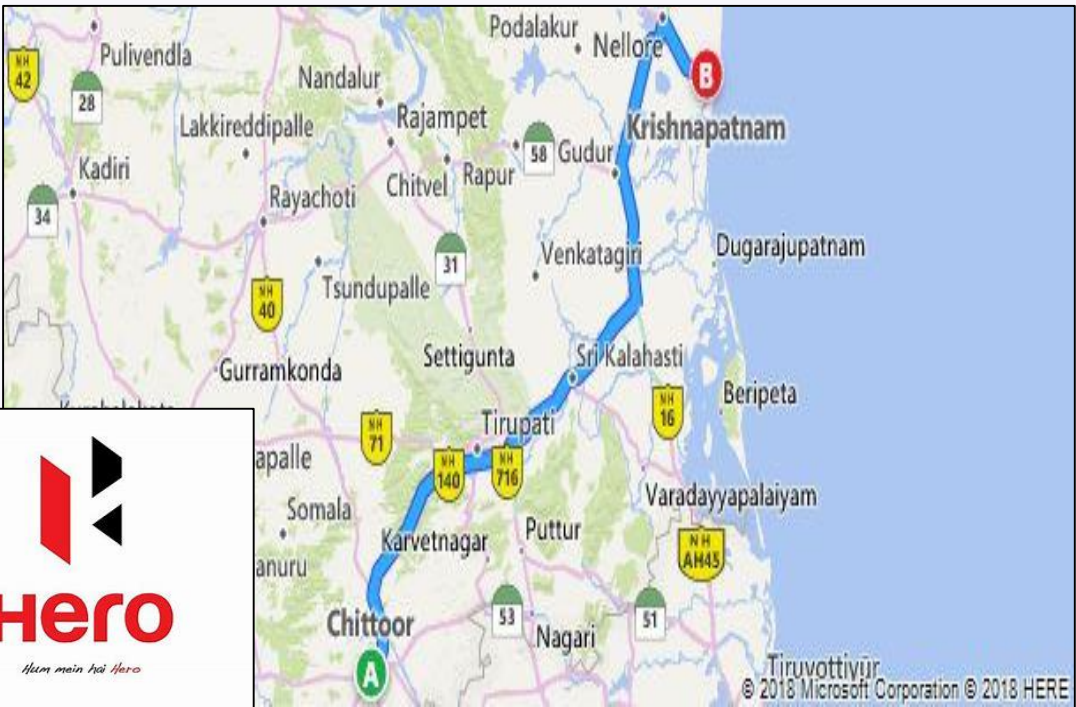
Container Scanner



Most sophisticated drive through container scanner installed, commissioned and Operational at NCT
Permission granted from 9th May 2018



RoRo Terminal Facilities





THANK YOU